

MASTERTENT® **ECOTENT®** 

Professional Tent Series Comparison

MASTERTENT®

ECOTENT® 

Three Professional Tent Series

We build three models of professional-grade quality, offering flexible customization, durability and budget.



Master Tent S1

Industry-Leading All-Aluminum with Premium Features and Innovative Styles



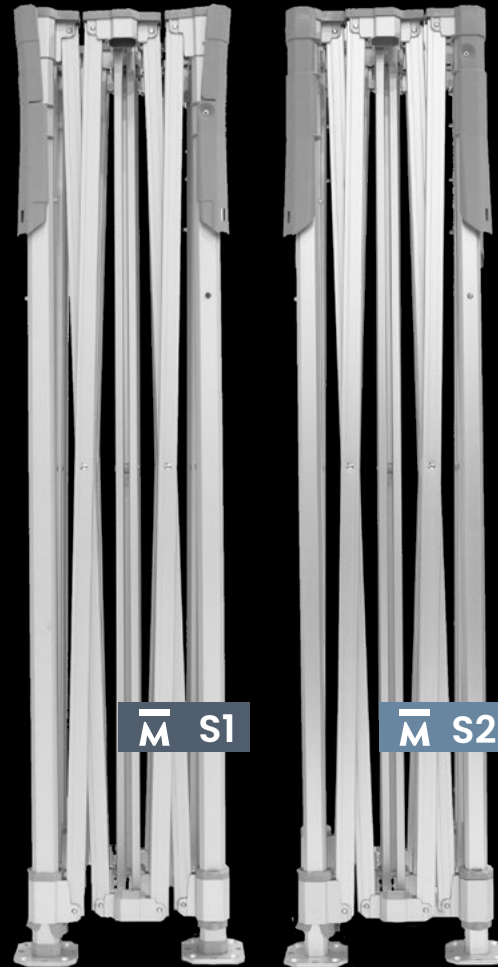
Master Tent S2

Excellent All-Aluminum Build in a Classic Design



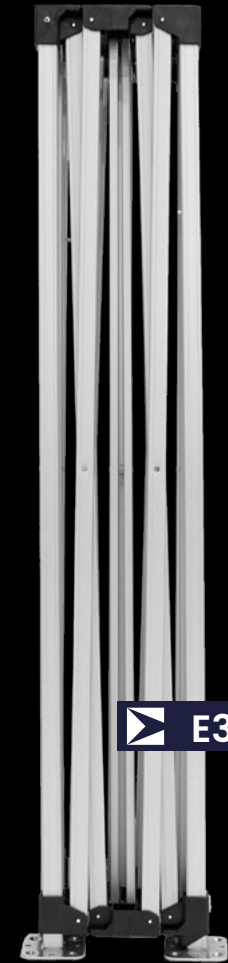
Ecotent E3

Great Pro-Starter in a Budget-Friendly Package



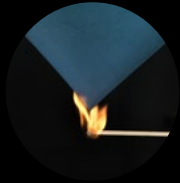
M S1

M S2



E3

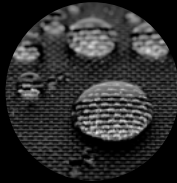
What makes a professional tent?



Certified
Fire-Rated



Wind-Tunnel
Tested



100%
Waterproof



Aluminum vs
Steel Build



/ Frame Strength & Durability

Robust aluminum frames with premium finishes.

/ Pro Features & Ease of Use

60-second setup, smart accessories, premium finishes.

/ Wind & Weather Performance

Crafted and tested for wind, sun, and rain performance.

/ Appearance & Customization

Endless customization, mix-and-match walls, colors and printing.

/ Measurements & Specs

Wide size ranges, compact pack size, and transport accessories.

Pro Tent Construction

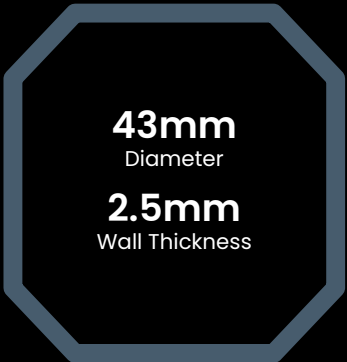


Attachable Wheel Kit

Three Professional Frame Models

MASTERTENT®

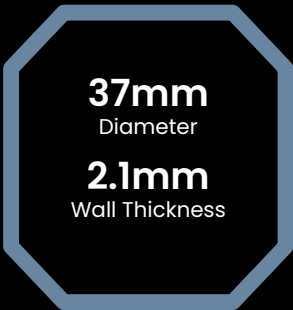
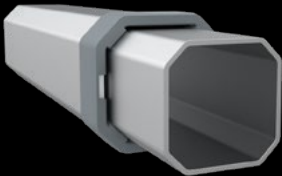
ECOTENT®



43mm
Diameter
2.5mm
Wall Thickness

Series 1

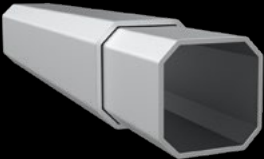
10x10 • 15x10 • 20x10
13x13 • 20x13 • 26x13
13x6.5 • 17x17



37mm
Diameter
2.1mm
Wall Thickness

Series 2

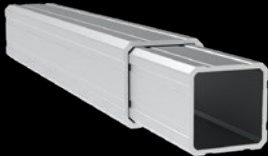
10x10 • 15x10 • 20x10
5x5 • 10x5 • 6.5x6.5 • 10x6.5



32mm
Diameter
2mm
Wall Thickness

E3

10x10 • 15x10 • 20x10
5x5 • 10x5 • 6.5x6.5 • 10x6.5



Series 1 | Professional Canopy Tents

MASTERTENT.



Technical Details		Mastertent Series 1
Frame Material		All-Aluminum Extruded T-606 Aircraft Grade
Frame Leg Construction		Octagonal Leg, 43mm Diameter 2.5mm Wall Thickness
Available Sizes	Popular	10x10, 15x10, 20x10
	Large	13x6.5, 13x13, 20x13, 26x13, 17x17
	Small	See Series 2 Tents
10x10 Tent Specs		Pack Size: 14 x 14 x 63" Weight: 72lb (32.7kg)
Customization		
Tent Roof Styles		
Frame Height Adjustments		2-3 Adjustable Heights Up to 36" Height Extensions
Powder Coated Frame Colors		
Custom Fabrication		✓ Custom Walls & Tent Modifications on Request

Series 2 | Professional Canopy Tents



- A Rubber Protective Cap
- B Tensioning Bracket
- C Aluminum Connecting Elements
- D Heavy-Duty PVC Transport Bag

Technical Details		Mastertent Series 1
Frame Material		All-Aluminum Extruded T-606 Aircraft Grade
Frame Leg Construction		Octagonal Leg, 37mm Diameter 2.1mm Wall Thickness
Available Sizes	Popular	10x10, 15x10, 20x10
	Large	See Series 1 Tents
	Small	5x5, 10x5, 6.5x6.5, 10x6.5
10x10 Tent Specs		Pack Size: 14 x 14 x 63" Weight: 59lb (26.6kg)
Customization		
Tent Roof Styles		
Frame Height Adjustments		3 Adjustable Heights Up to 12" Height Extensions
Frame Color		
Custom Fabrication		✓ Custom Walls & Tent Modifications on Request

E3



32mm

Diameter

2mm

Wall Thickness

A Nylon Connecting Elements

B Ribbed Aluminum Frame

C Oxford Poly Transport Bag

TECHNICAL DETAILS

E3°

Frame Material

Aluminum & Nylon
Extruded T-606
Aircraft Grade

Frame Leg
Construction

Ribbed Square Leg
32mm Diameter
2mm Wall Thickness

Available
Sizes

Popular

10x10, 15x10, 20x10

Large

See S1 Tents

Small

5x5, 10x5, 6.5x6.5, 10x6.5

CUSTOMIZATION

Tent Roof Styles



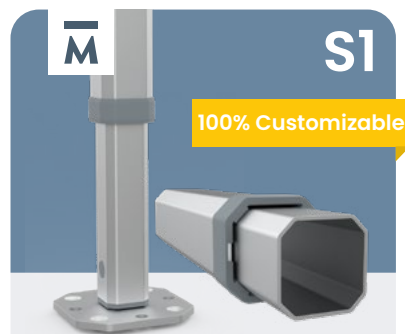
10x10 Tent Specs

Pack Size: 14 x 14 x 63"
Weight: 50.2lb (22.8kg)

Frame Height
Adjustments

1 Height Setting

Series Overview



Core & Large Tent Sizes

43mm

Leg Profile Diameter

All-Aluminum

2.5mm Frame Thickness

 Octagonal Leg

✓ Spring-Loaded

Roof Corner Tensioners

2-3 Adjustable Height Levels

- ✓ 1-36" Height Extensions



5 Signature Roof Styles



Custom Frame Colors

✓ Custom Fabrication Requests



Core & Small Tent Sizes

37mm

Leg Profile Diameter

All-Aluminum

2.1mm Frame Thickness

 Octagonal Leg

✓ Fixed-Position

Roof Corner Tensioners

3 Adjustable Height Levels

- ✓ 1-12" Height Extensions



Classic Tent Roof



Anodized Aluminum Frame

✓ Custom Fabrication Requests



Core & Small Tent Sizes

32mm

Leg Profile Diameter

Aluminum & Nylon

2mm Frame Thickness

☐ Ribbed Square Leg

X Direct-to-Frame Mounting

1 Height Level

X No Height Extensions



Classic Tent Roof



Anodized Aluminum Frame

- ✓ Fabrication Requests for Volume Buyers

Fabrics Overview

<div><div><div>M</div><div><div>Most Sustainable</div></div></div><div><div><div>M</div><div></div></div></div></div> <div><div><div>Pirontex</div></div></div> <div><div><div>600 Denier</div><div>Double-Weave Polyester 1,500D PE</div><div>330% Waterproof 5,000mm Water Column</div><div>UPF 50+ Color Fastness Blue Scale 7-8/8</div><div><div><div></div></div></div><div><div>Fire-Retardant</div><div>NFPA 701, CPAI-84 Sec.6, EN 13501-1:2019, CAN/ULC-S109 1237</div><div><div></div><div></div><div></div><div></div><div></div><div></div><div></div><div></div><div></div><div></div></div><div>Matte Fabric Finish</div></div></div></div>	<div><div><div>M</div><div></div></div></div> <div><div><div>Oxford 500D</div></div></div> <div><div><div>500 Denier</div><div>Double Weave Polyester 1,000D PE</div><div>150% Waterproof 2,000mm Water Column</div><div>UPF 50+ Color Fastness Blue Scale 4.5-6.5/8</div><div><div><div></div></div></div><div><div>Fire-Retardant</div><div>NFPA 701, CPAI-84 Sec.6, EN 13501-1:2019, CAN/ULC-S109 1237</div><div><div></div><div></div><div></div><div></div><div></div><div></div><div></div><div></div><div></div><div></div></div><div>Glossy Fabric Finish</div></div></div></div>	<div><div><div>M</div><div></div></div></div> <div><div><div>Oxford 250D</div></div></div> <div><div><div>250 Denier</div><div>Double Weave Polyester 500D PE</div><div>100% Waterproof 1,600mm Water Column</div><div>UPF 50+ Color Fastness Blue Scale 4.5-6.5/8</div><div><div><div></div><div></div></div></div><div><div>Fire-Retardant</div><div>Fire-retardant and non- fire retardant options available.</div><div><div></div><div></div><div></div><div></div><div></div><div></div><div></div><div></div><div></div><div></div></div><div>Glossy Fabric Finish</div></div></div></div>	<div><div><div>Average Rec</div></div></div> <div><div><div>300 Denier</div><div>Single Layer Polyester 300D PE</div><div>X Water Resistant <1,500mm Water Column</div><div>UPF 50+ Color Fastness Blue Scale 3.5-5.5/8</div><div><div><div></div><div></div></div></div><div><div>Fire-Resistant</div><div>Treated for fire-resistant certifications or non-fire treated options.</div><div><div></div><div></div></div><div>Varied Colors & Finishes</div></div></div></div>
---	---	--	---

Specialty Fabrics

Heavy-Duty PVC
Waterproof PVC material for
heavy-duty use tent fabrics.

Refractory Fiberglass
Fiberglass ‘fireproof’ material
for extremely high temperatures.

Recycled Fabric
Eco line made from 100% recycled
PET plastics.

Tent Fabric Glossary

Denier:

Thickness and weight of a fabric’s fibers and threads. Mass in grams of 9,000m of a fiber.

Water Column:

A hydrostatic pressure test to measure the amount of water pressure a fabric can withstand before water penetrates through.

UPF:

Ultraviolet Protection Factor: A fabric’s effectiveness in blocking ultraviolet radiation.

PE:

Performance Equivalent: Real world performance calculation of denier in oxford, double-weave fabric construction.

Blue Scale:

Method for measuring lightfastness of textiles, the permance of color agents, and effects of light exposure. Scale of 1-8 with 8 being the most resistant to fading.


Technical Details
Pirontex®
Oxford 500D

Yarn Count

600D Double-Spun Weave

500D Oxford Weave (Functional 1,000D)

Weight

255 g/m²

220 g/m²

Elongation (EN 53360)

6% Permanent Elongation

9.4% Permanent Elongation

Bending Strength
(DIN EN ISO 32100)

without UV exposure:
cracking after 100,000 folds

without UV exposure:
cracking after 20,000 folds

with UV exposure:
cracking after 31,500 folds

with UV exposure:
cracking after 8,000 folds

Waterproof Rating (DIN EN 20811)

5,000mm Water Column

1,600mm Water Column

Color Fade
Resistance

(DIN EN ISO 105-B02)

Dyed Thread

Bluescale: 7-8 (of max. 8)

Dyed Fabric

Bluescale: 4.5-6.5 (of max. 8)

(DIN EN ISO 105-A02)

Greyscale: 4.5 (of max. 5)

Greyscale: 3.5 (out of max. 5)

Coating

Nano Coating:
Water, Oil and Dirt Repellent

Water Repellent

Fire Rating Class
(NFPA 701, DIN EN 13501-1: 2018)

B - s1, d0 (difficult to ignite)

B - s1, d0 (difficult to ignite)


50% Less Energy
Consumption*

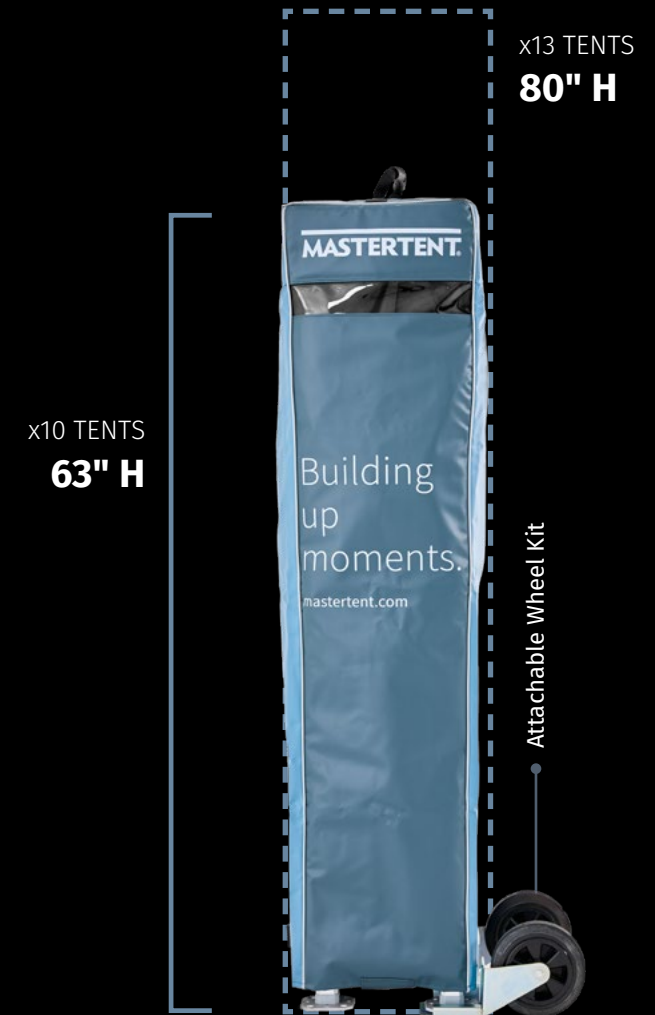
60% Less CO₂
Emission*

80% Less Water
Consumption*

*Pirontex production stats compared to standard textile production.

Pack Size & Transport Specs

Size	S1	S2	E3
5x5ft	—	35.2lb (16kg)	35.9lb (16.3kg)
10x5ft	—	44.7lb (20.3kg)	44.2lb (20.1kg)
6.5x6.5ft	—	49.3lb (22.4kg)	51.3lb (23.3kg)
10x6.5ft	—	61.8lb (28.1kg)	64lb (29.1kg)
10x10ft	72lb (32.7kg)	59lb (26.6kg)	50.2lb (22.8kg)
15x10ft	92.4lb (42kg)	75.5lb (34.3kg)	65.8lb (29.9kg)
20x10ft	123.6lb (56.2kg)	102.5lbs. (46.6kg)	88.4lb (40.2kg)
13x6.5ft	66.9lb (30.4kg)	—	—
13x13ft	90.9lb (41.3kg)	—	—
20x13ft	117.5lb (53.4kg)	—	—
26x13ft	156.9lb (71.3kg)	—	—
17x17ft	152.7lb (69.4kg)	—	—



Which tent is right for me?

Explore more from our two professional canopy tent brands: Mastertent and Ecotent. Every brand and tent is backed with our quality and customer service guarantees.



MASTERTENT.

Bespoke customization with sleek, sophisticated premium quality. Complementary 1-Year Pro Care Coverage.

Explore Mastertent



ECOTENT.

Step into commercial quality with our introductory Ecotent model. Ready-to-go, aluminum frame with performance outdoor fabrics.

Lean on your Product Expert!

We're here to help with any questions, custom requests, and more.



sales.usa@zingerle.group • 704.312.1600
mastertent.com