

# 10x10ft Pagoda



Our professional-grade tents can mix and match frame and fabric quality, roof styles, colors, customizations, and more.

**Rely on your Product Expert or visit our quick links:**

[Mastertent Website](#)

[Tent Sizes](#)

[Construction Details](#)

[3D Tent Configurator](#)

[Photo Gallery](#)

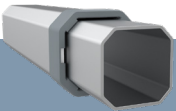
[Warranties & Certificates](#)

## Frame Specifications

### Frame Construction

**Frame Material**  
**Leg Shape & Profile**  
**Truss Profile**  
**Connecting Elements**  
**Push-Button Locks**  
**Corner Brackets**

**S1**



3x Strong, All-Aluminum (T606)  
Octagonal Leg, 43mm (2.5mm)  
30x15mm (2.8mm)  
✓ Aluminum with Rubber Caps  
✓ Comfort Press  
✓ Spring Tension & Corner Clips

**Weight**

73.3lbs. (33.3kg)

**Transport Bag**

Heavy-Duty PVC with Window

## Customization Options

### Roof Styles



### Frame Colors

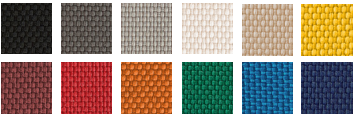


### Frame Height Extensions

✓ Up to 36"

### Peak Flag Capable

X



## Custom Printing

Individual Logo or Full Surface



## Roof Fabric Options

Pirontex®, Oxford Weave 500D Polyester,  
Heavy-Duty PVC, Fiberglass, Loden

## Textile Properties

### Pirontex®

### Oxford 500D

**Waterproof Rating**  
(DIN EN 20811)

✓ 5x Industry Avg  
5,000mm Water Column

✓ 2x Industry Avg  
1,600mm Water Column

**Fire Rating Class**  
B - s2, d0 (difficult to ignite)

NFPA 701, CPAI-84 Sec.6, EN 13501-1:2019,  
CAN/ULC-S109, CA Title 19 Sec. 1237

**Color Fade Resistance**  
(DIN EN ISO 105-B02)

Extreme  
(blue scale 7.0-8.0 of 8.0)

Durable  
(blue scale 4.5-6.5 of 8.0)

