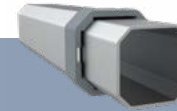


13x13ft



Frame Specifications

S1



Frame Construction

| | |
|--------------------------------|---------------------------------|
| Frame Material | 3x Strong, All-Aluminum (T606) |
| Leg Shape & Profile | Octagonal Leg, 43mm (2.5mm) |
| Truss Profile | 30x15mm (2.8mm) |
| Connecting Elements | ✓ Aluminum with Rubber Caps |
| Push-Button Locks | ✓ Comfort Press |
| Corner Brackets | ✓ Spring Tension & Corner Clips |

Weight

90.9lbs. (41.3kg)

Transport Bag

Heavy-Duty PVC with Window

Customization Options

Roof Styles



Frame Colors

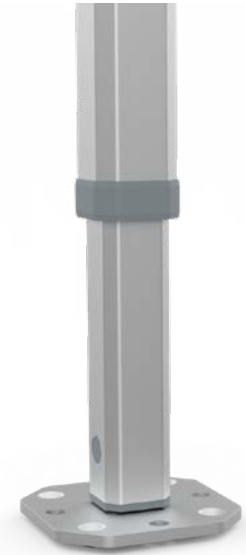


Frame Height Extensions

✓ Up to 36"

Peak Flag Capable

✓ Frame & Roof Integrated



Our professional-grade tents can mix and match frame and fabric quality, roof styles, colors, customizations, and more.

Rely on your Product Expert or visit our quick links:

[Mastertent Website](#)

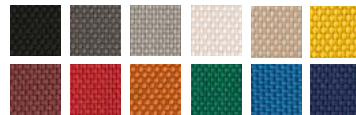
[3D Tent Configurator](#)

[Tent Sizes](#)

[Photo Gallery](#)

[Construction Details](#)

[Warranties & Certificates](#)



Custom Printing

Individual Logo or Full Surface



Roof Fabric Options

Pirontex®, Oxford Weave 500D Polyester, Heavy-Duty PVC, Fiberglass, Loden

Textile Properties

Waterproof Rating

Pirontex®

✓ 5x Industry Avg
5,000mm Water Column

Fire Rating Class

NFPA 701, CPAI-84 Sec.6, EN 13501-1:2019, CAN/ULC-S109, CA Title 19 Sec. 1237

Color Fade Resistance

Extreme
(blue scale 7.0-8.0 of 8.0)

Oxford 500D

✓ 2x Industry Avg
1,600mm Water Column

Durable
(blue scale 4.5-6.5 of 8.0)